

Okay PLUS

PBK
ParamBhuKripa

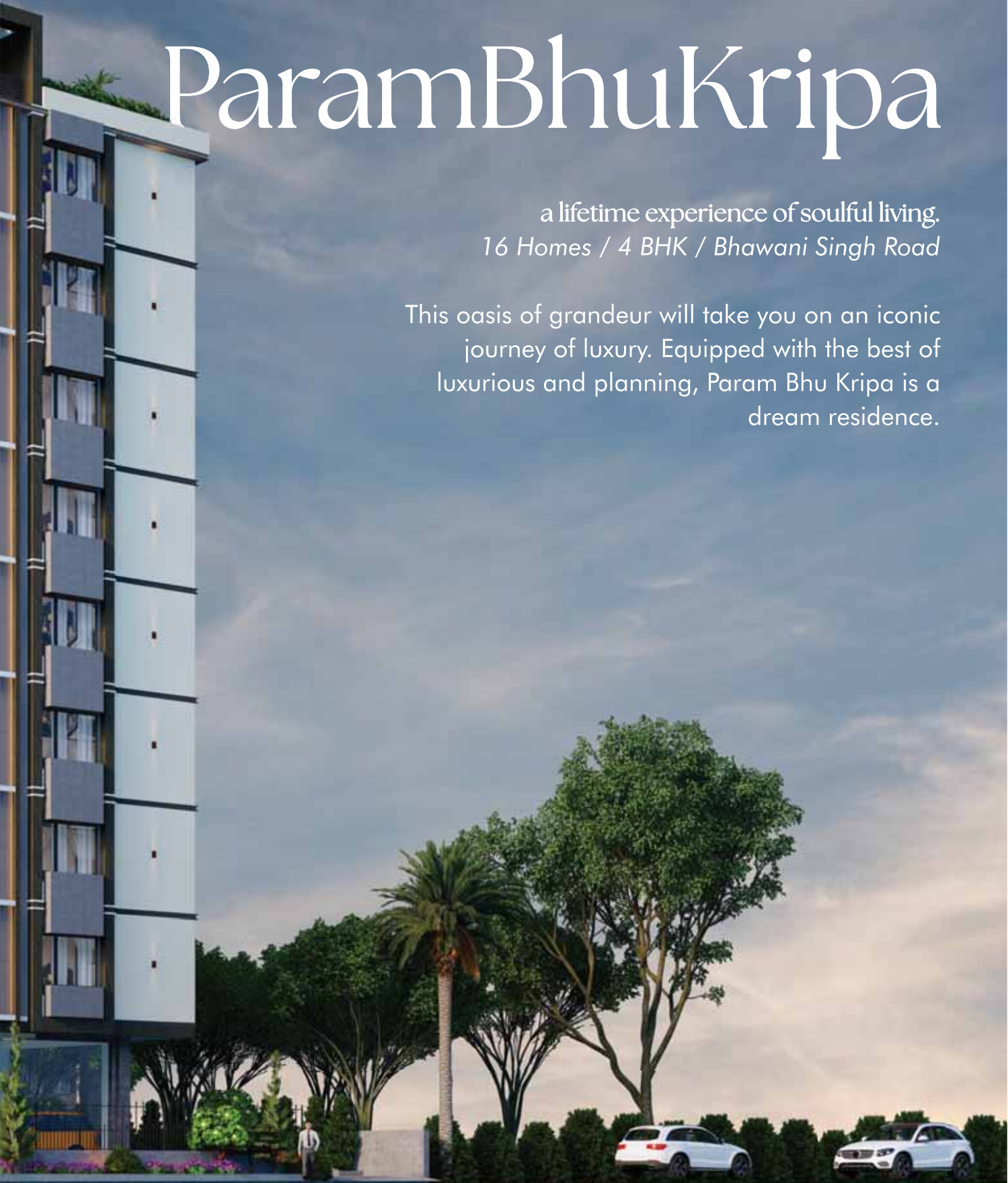
A haven crafted for
LUXURIOUS LIVING



ParamBhuKripa

a lifetime experience of soulful living.
16 Homes / 4 BHK / Bhawani Singh Road

This oasis of grandeur will take you on an iconic journey of luxury. Equipped with the best of luxurious and planning, Param Bhu Kripa is a dream residence.



luxury AMENITIES

A Rooftop that echoes Luxury.

Param Bhu Kripa's luxurious amenities offer you with a captivating choice of activities.

Our aesthetically planned rooftop bestows the flexibility to start your day on a healthy note and rejuvenate in the evenings. A picturesque escape to a dream lifestyle.



Gazebo



Barbeque



Sit-out Area



Public Garden



Gym Area



Yoga & Meditation

large BEDROOM

Rest better, Work better.

A piece of serene aesthetic envisioned to be a poetic ode to comfort, our bedrooms offer an island of bliss and tranquility.





Work from home area

Step into a space that seamlessly combines comfort and functionality, offering the perfect environment for maximum productivity.

Designed to inspire creativity and focus, the work from home area is an ideal setup for elevating your work and routine.



Wide balcony area

Each balcony offers a unique view, allowing you to soak in the beauty of your surroundings. Whether you're enjoying a morning cup of coffee or unwinding after a long day, these balconies provide the perfect outdoor retreat.



Pooja room

Designed to inspire peace and reflection, this sacred space is adorned with intricate details and exquisite craftsmanship. The ambiance is serene, with soft lighting and elegant decor that create a sense of calmness and reverence.



Sitting area

Designed to be the heart of the home, this space exudes elegance and style. From the plush furnishings to the tasteful decor, every element is thoughtfully curated to create a harmonious and inviting atmosphere.



Multi-purpose hall

Designed to cater to your every need, this space is perfect for hosting events, gatherings, or simply enjoying leisure activities. With its spacious layout and tasteful decor, the multi-purpose hall offers endless possibilities for entertainment and relaxation.



TERRACE

**3D Visualisation*

Rera- RAJ/P/2022/1857





Designed for a
DREAM
lifestyle

3D INTERIOR MODULE OF 4 Bedroom Apartment

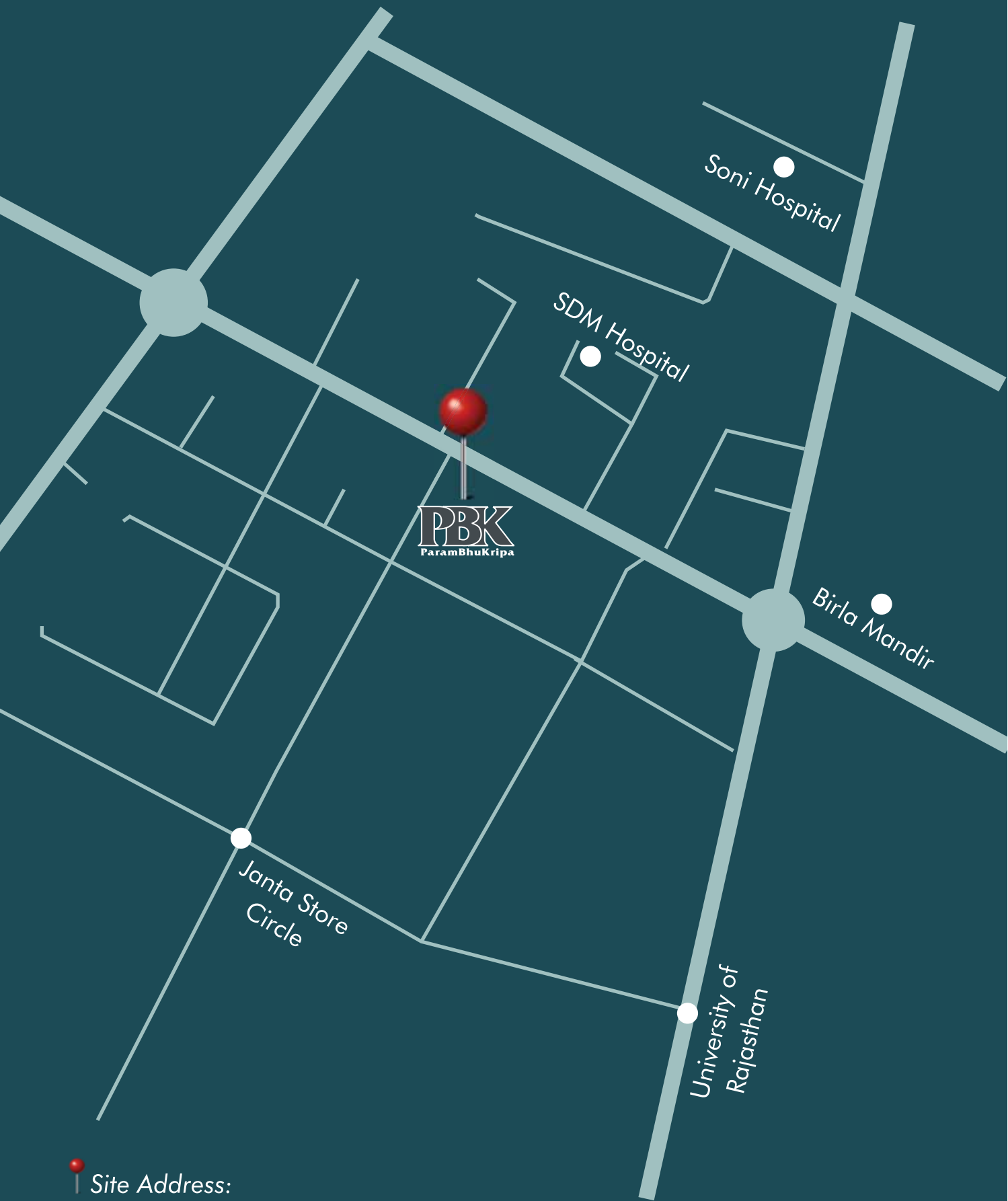


| Flat No. | Carpet Area Sq.Ft. | Balcony Area Sq.Ft. | Builtup Area Sq.Ft. | Saleable Area Sq.Ft. | Flat Type |
|----------|--------------------|---------------------|---------------------|----------------------|-----------|
| 101 | 1873.00 | 139.00 | 2091.00 | 2825.00 | 4 BHK |

3D INTERIOR MODULE OF 4 Bedroom Apartment



| Flat No. | Carpet Area Sq.Ft. | Balcony Area Sq.Ft. | Builtup Area Sq.Ft. | Saleable Area Sq.Ft. | Flat Type |
|----------|--------------------|---------------------|---------------------|----------------------|-----------|
| 102 | 1873.00 | 139.00 | 2091.00 | 2825.00 | 4 BHK |



Site Address:

SB 16, Bhawani Singh Road,
Opp. SDMH, Bapu Nagar, Jaipur
Rajasthan 302015

prime LOCATION

A location that echoes connectivity

Located in the heart of the city on 100 ft. wide Bhawani Singh Road between JLN Marg and Tonk Road, Jaipur, Param Bhu Kripa places you at the midst of all conveniences of life.

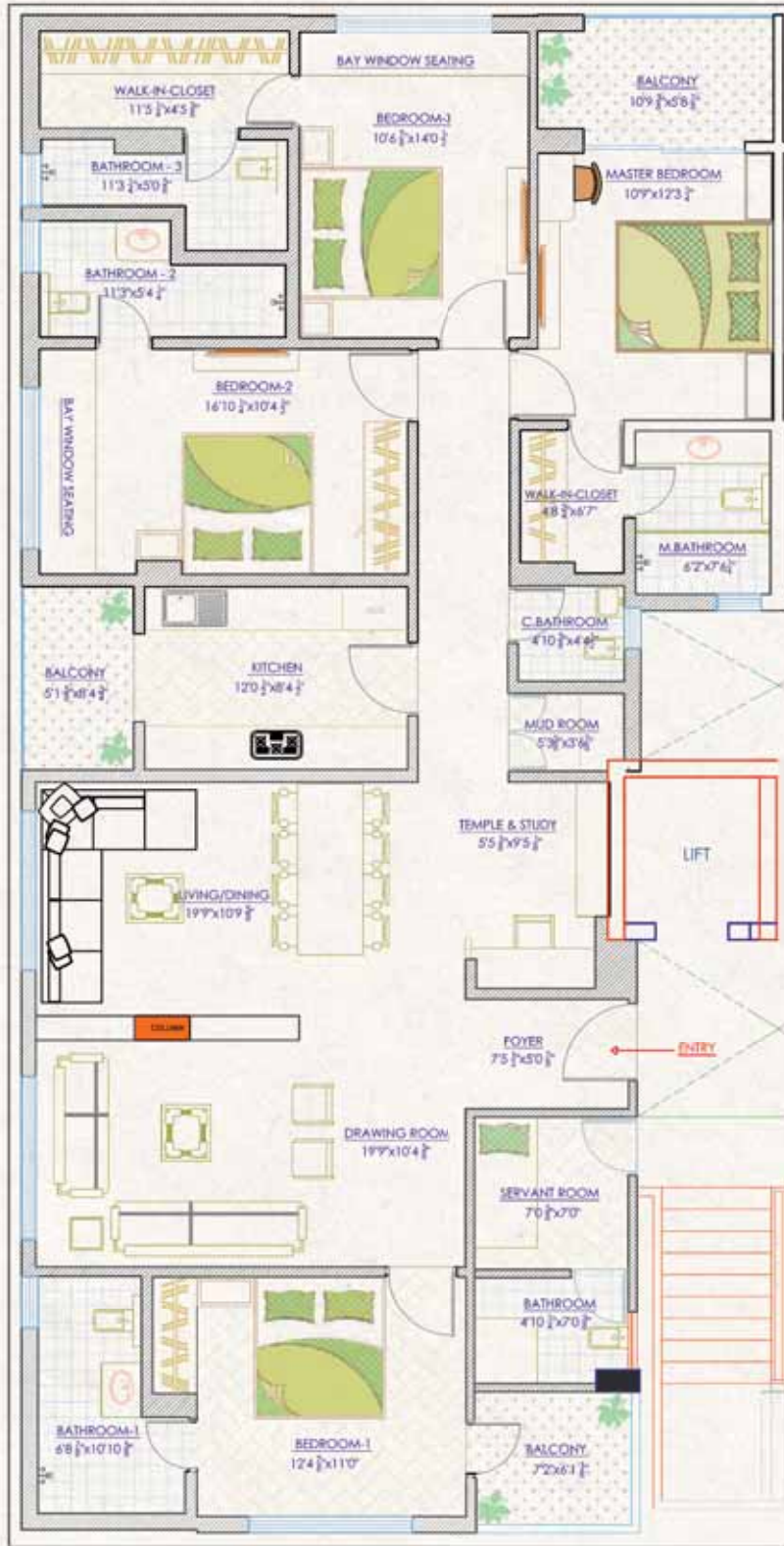
Convenience is key with our location – we're just 500 meters from Rambagh, 1 km from Moti Dungri Temple, and a mere 300 meters from JLN. What's more, each apartment features three-sided balconies, allowing you to soak in the beauty of your surroundings.

| | |
|--------------------------|--------------|
| 1. Moti Doongri Mandir | 1 KM |
| 2. Birla Mandir | 500 M |
| 3. Hotel Ram Bagh Palace | 500 M |
| 4. SDMH | Opposite PBK |
| 5. SMS Stadium | 1.5 KM |
| 6. Rajasthan University | 1 KM |

**These are approximate distances*

FLOOR PLAN

SDMH MAIN ROAD 100' WIDE



6000 SQ YARDS PUBLIC PARK

| Flat No. | Carpet Area Sq.Ft. | Balcony Area Sq.Ft. | Builtup Area Sq.Ft. | Saleable Area Sq.Ft. | Flat Type | North |
|----------|--------------------|---------------------|---------------------|----------------------|-----------|-------|
| 102 | 1873.00 | 139.00 | 2091.00 | 2825.00 | 4 BHK | N ▲ |

FLOOR PLAN

SDMH MAIN ROAD 100' WIDE



6000 SQ YARDS PUBLIC PARK

| Flat No. | Carpet Area Sq.Ft. | Balcony Area Sq.Ft. | Builtup Area Sq.Ft. | Saleable Area Sq.Ft. | Flat Type | North |
|----------|--------------------|---------------------|---------------------|----------------------|-----------|-------|
| 101 | 1873.00 | 139.00 | 2091.00 | 2825.00 | 4 BHK | N▲ |

surrounded by **GREENERY**

Live amidst the greens

Back side of the project opens up to sprawling park spanning 6000 sq yards, ensuring tranquility and greenery right at your doorstep



exciting FEATURES

ENTRANCE



Step into luxury as you enter our spacious entrance foyer, featuring a reception area in the lobby.

WATER



Our water supply is sourced from our own bore well, ensuring a reliable and consistent water source for our residents.

ELEVATOR



We have installed two automatic elevators to ensure convenience for all residents.

RAIN WATER



Our rainwater harvesting system is a sustainable and eco-friendly solution designed to capture and store rainwater for various uses.

KITCHEN



Our elegant modular kitchen is designed to elevate your cooking experience to new heights.

COMMON AREA



Our ground floor is designed to offer a versatile space that caters to various needs, featuring a multi-purpose hall and a spacious waiting lobby.



Mechanical Parking



Servant Room



Powder Room



Security

detailed SPECIFICATION

| | | |
|----------------------|---|---|
| STRUCTURE: | Earthquake Resistant | |
| WALL: | Brick | |
| ROOF: | R.C.C. Frame Structure | |
| WINDOW: | U.P.V.C./ Aluminium | |
| DOOR: | Main Entrance | Teak wood frame Flush Door with Laminated Veneer |
| | Living/Dining Bedroom & Other | Timber Flush Door with Mica |
| FLOOR FINISH: | Living/Dining/Lobby Bedrooms/Kitchen Bathroom/Balconies | Imported Marble Vitrified Tiles Anti Skid Vitrified Tiles |
| WALL FINISH: | POP with Velvet Paint | |
| BALCONY: | Plastic Paint on Ceiling | S.S Railing with Toughened Glass |
| PLUMBING: | Bath & Kitchen Fittings | Jaquar or Equivalent |
| SANITARY: | Kitchen Sink | Double Bowl Stainless Steel |
| ELECTRICAL: | Wiring Switches | Concealed Copper Wiring Premium Quality Modular |
| POWER BACKUP: | Necessary Power Backup in each Flat by D.G. Set | |
| AC: | Copper Tubing | |
| SECURITY: | Intercom Network, Multi Apartment Video Door Phone & Panic Button in each Flat CCTV Cameras, Biometric Lock System in Common Area, Gas Leakage Detector | |
| PARKING: | Ample Parking on Stilt Floor, Open & Covered Mechanical Parking | |





Okay PLUS Group

Okay PLUS House, Kiran Path, Suraj Nagar (West), Civil Lines
Jaipur, Rajasthan

CONTACT: +91 98294 33479

www.okayplusgroup.com

RERA: RAJ/P/2022/1857

This brochure is not a legal document. It only describes the conceptual plan to convey the intent and purpose of the developers.
The specifications and details mentioned in this brochure are tentative and are subject to change at the sole discretion of the developers and/or the architects.